

VOIMATALO

Vibrant worklife in the heart of Helsinki.



Voimatalo,

A UNIQUE WORKPLACE IN A HISTORIC LANDMARK

- Iconic and historic building in the heart of Helsinki's Kamppi district
- Prime location with excellent restaurants, services, and amenities within the same block
- Comprehensive property services ensuring a seamless work environment
- Breathtaking views of the surrounding cityscape
- Unique top-floor space with high ceilings and refined details
- Opportunity to create an inspiring and distinctive workspace
- Expansive, stunning, and versatile wraparound terrace





Space for

INNOVATIVE & INVITING
WORKLIFE AND INSPIRING
FREETIME

Voimatalo is a distinct piece of pioneering office architecture, innovation and timeless design, completed in 1952 by renowned architect Aarne Ervi. Carefully reimagined for the needs of today's dynamic work-life, Voimatalo seamlessly blends its rich history with contemporary standards. The building's distinctive features and architectural charm continue to inspire. The stunning rooftop terrace is transformed into a lush, green oasis with breathtaking panoramic views over the vibrant Kamppi area.

Refreshed,

MODERN SPACE WITH A SOUL.

We are renovating Voimatalo while honoring the building's history, utilizing original architecture, materials, and furnishings. At the heart of the concept is lightness and brightness, cozy warmth, and subdued, light Scandinavian.



*kuvat: Pinterest

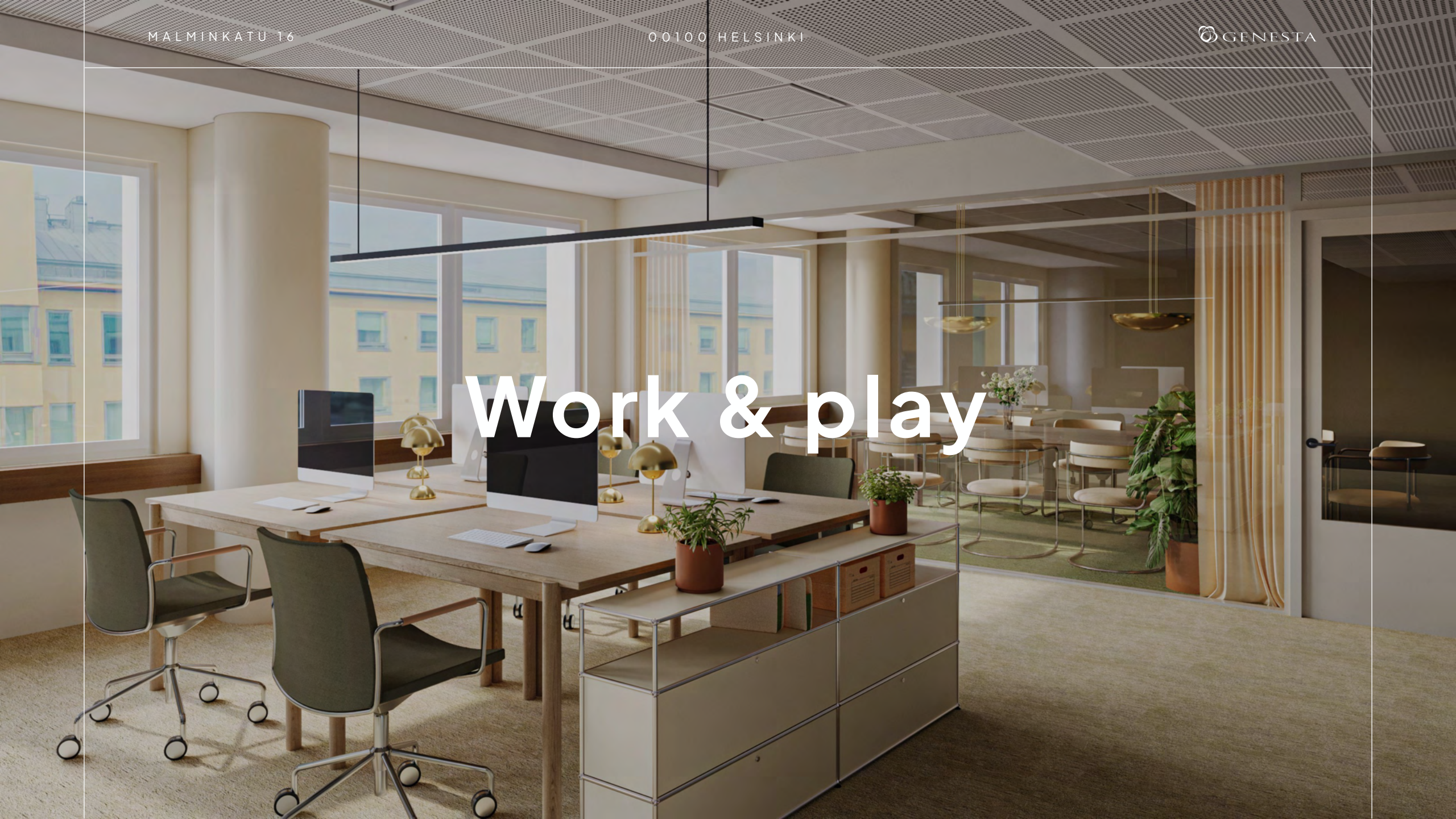


MALMINKATU 16

00100 HELSINKI

GENESTA

Work & play



A central spot

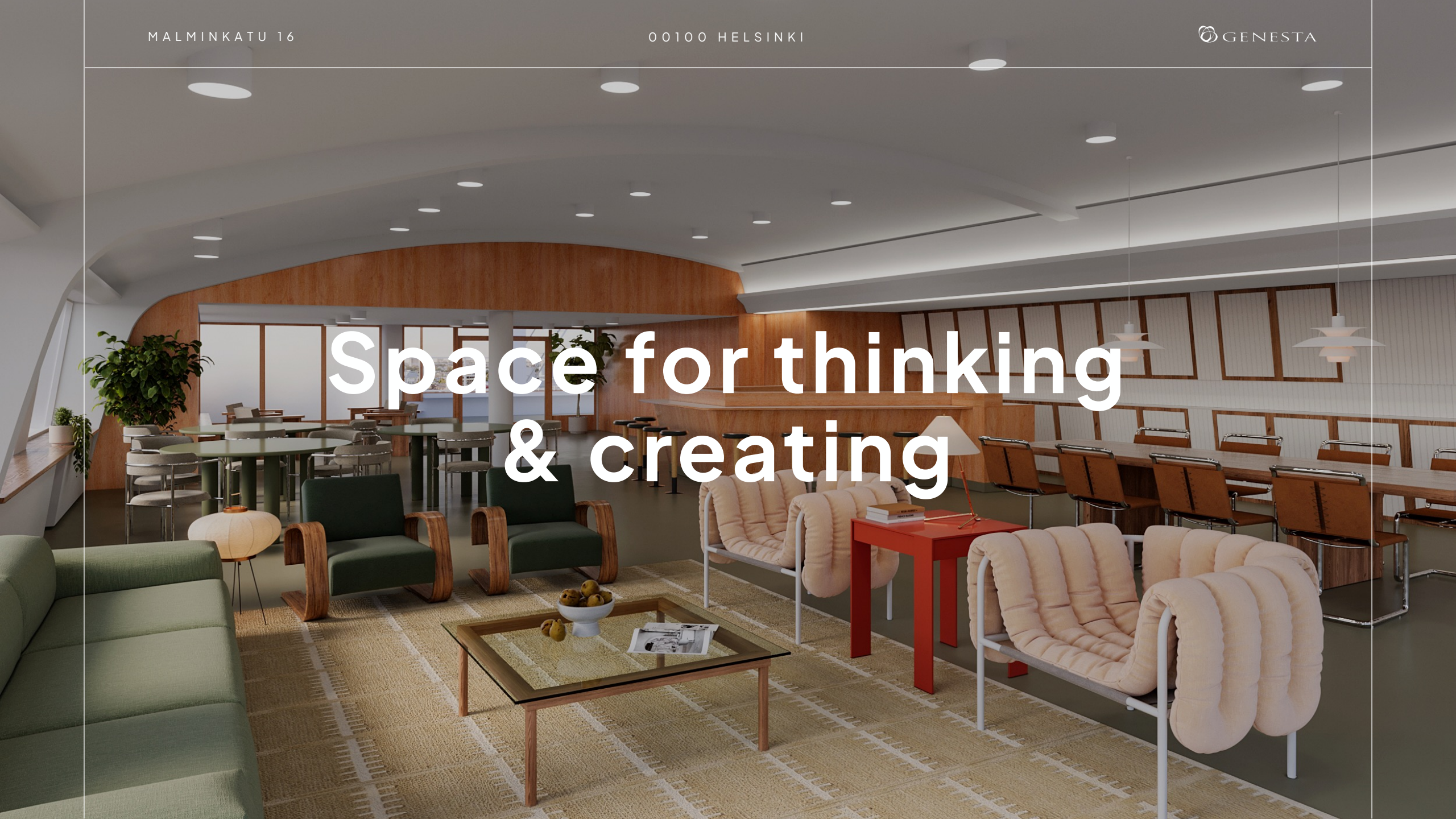
NEXT TO KAMPPI AND ALL THE DOWNTOWN SERVICES.

Located close to Kamppi's services, our peaceful block is just a short walk from Kamppi- and Forum shopping centers and a stone's throw away from the Central Railway Station, with a tram stop conveniently right outside. Whether it's lunch at one of the nearby restaurants, an afternoon coffee to recharge, or after-work drinks at the wine bar, everything is within easy reach. Need a quick fix for a busy day? The grocery store on the corner has you covered with lunch options, healthy snacks, or treats for client meetings. Voimatalo's block is a vibrant hub that combines convenience with calm, offering everything you need just steps away from downtown—a perfect balance of work and leisure.



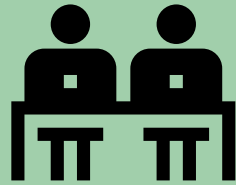


Space for thinking & creating





Own rooftop



Loads of co-
working space



Meeting rooms &
break rooms

19
52

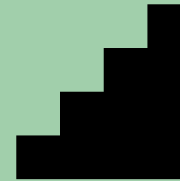
Valued
history



33 parking
spaces,
22 bicycle
parking spaces



approx. 9300 m²
space,
approx. 1000 m²/
floor



8 stories on
ground,
3 stories under
ground



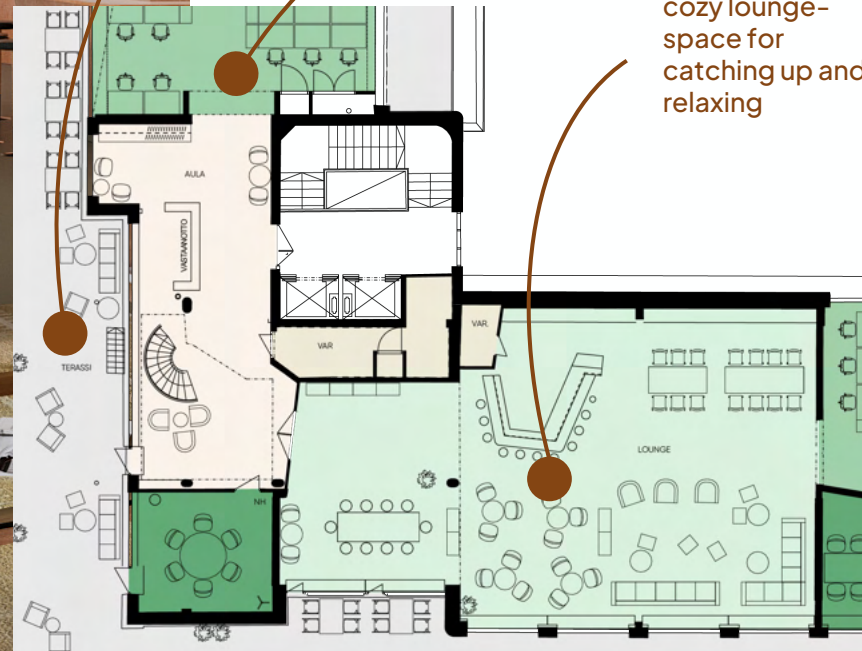
Social facilities
for both men and
women



spacious terrace for a
refreshing lunch or evening-
cocktail

versatile space to fit all your
office-dreams

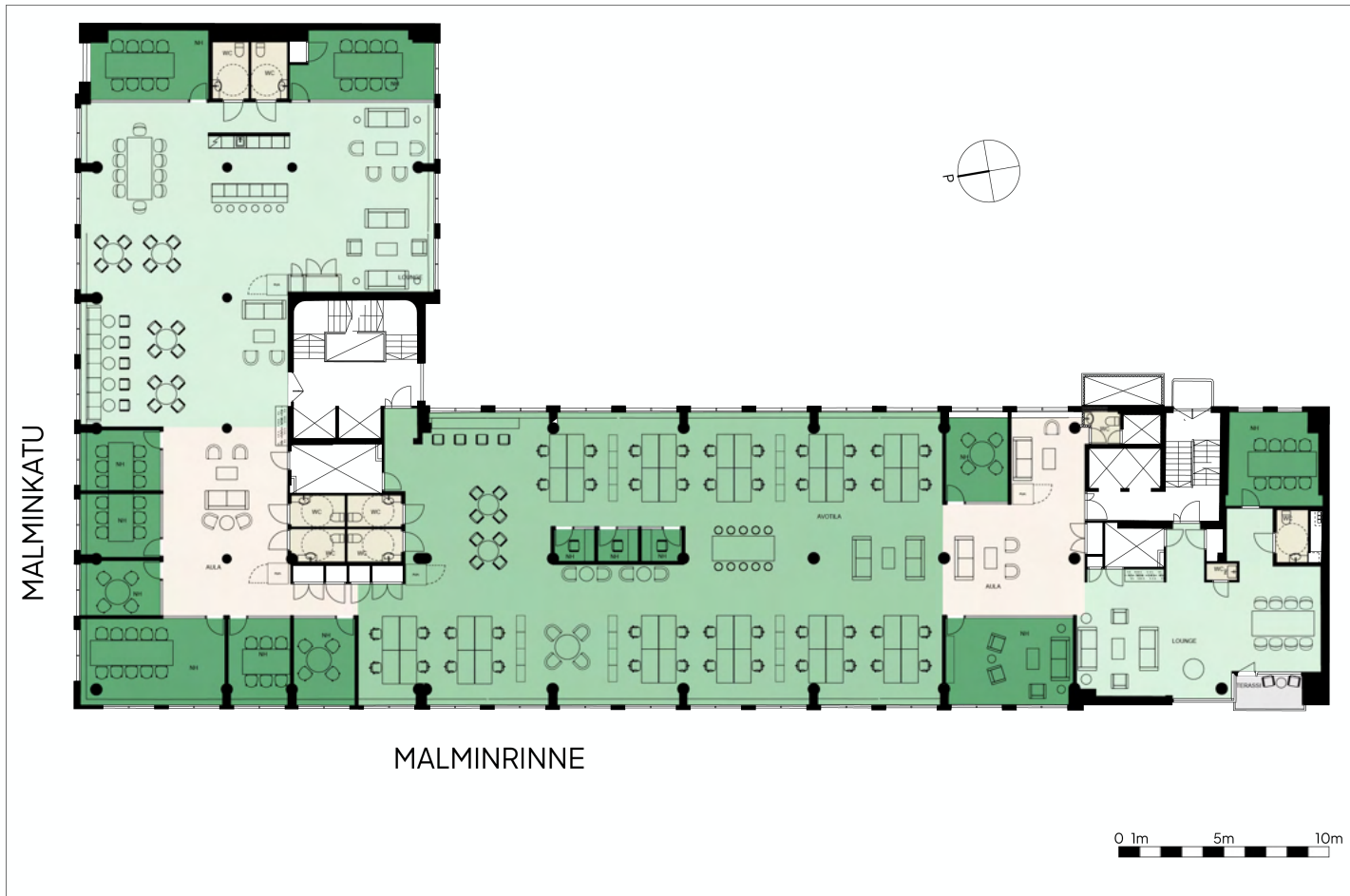
cozy lounge-
space for
catching up and
relaxing



Explore

THE POSSIBILITIES AT VOIMATALO - COZY LOUNGES AND A PRIVATE TERRACE











The architecture and interior design of the building combine innovation and rationality, as well as sensitivity and humanity. This is reflected in the deliberate, subtle details of Voimatalo and the refined interaction of various materials. The building's open floor plan adheres to the ideals of modern office design, allowing for flexibility and lightness.

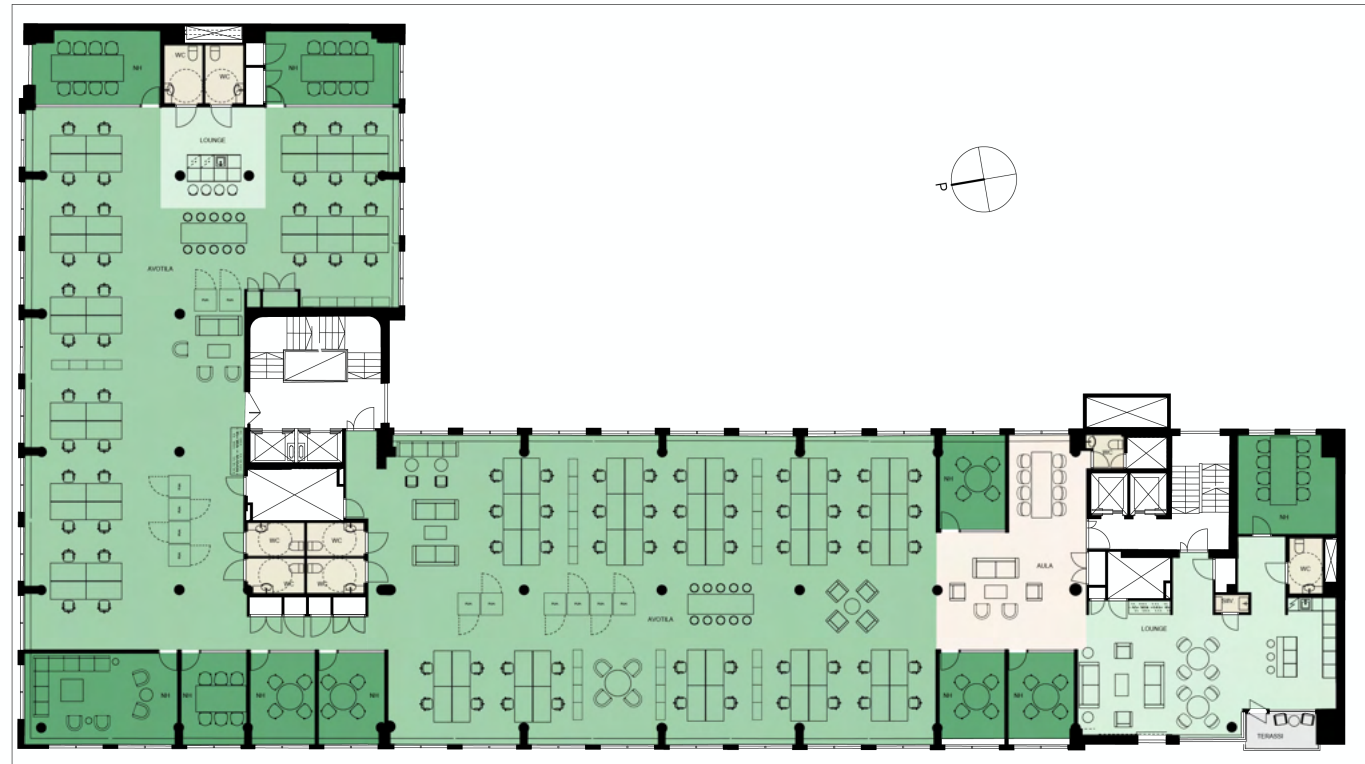


5TH FLOOR / 996 M²

996 m²

Number of workstations: 44 pcs

- Open space / Team rooms 
- Lounge 
- Lobby 
- Meeting rooms (2–4 ppl), 3 pcs 
- Meeting rooms (5–8 ppl), 7 pcs 
- Meeting rooms (8+ ppl), 1 pcs 
- Phone booth, 7 pcs 
- Toilets, 1 pcs 
- Accessible toilets, 7 pcs 
- Supporting facilities 



6TH FLOOR / 994 M²

994 m²

Number of workstations: 86 pcs

Open space / Team rooms



Lounge



Lobby



Meeting rooms (2–4 ppl), 5 pcs



Meeting rooms (5–8 ppl), 4 pcs



Meeting rooms (8+ ppl), 1 pcs



Phone booth, 12 pcs

Toilets, 1 pcs



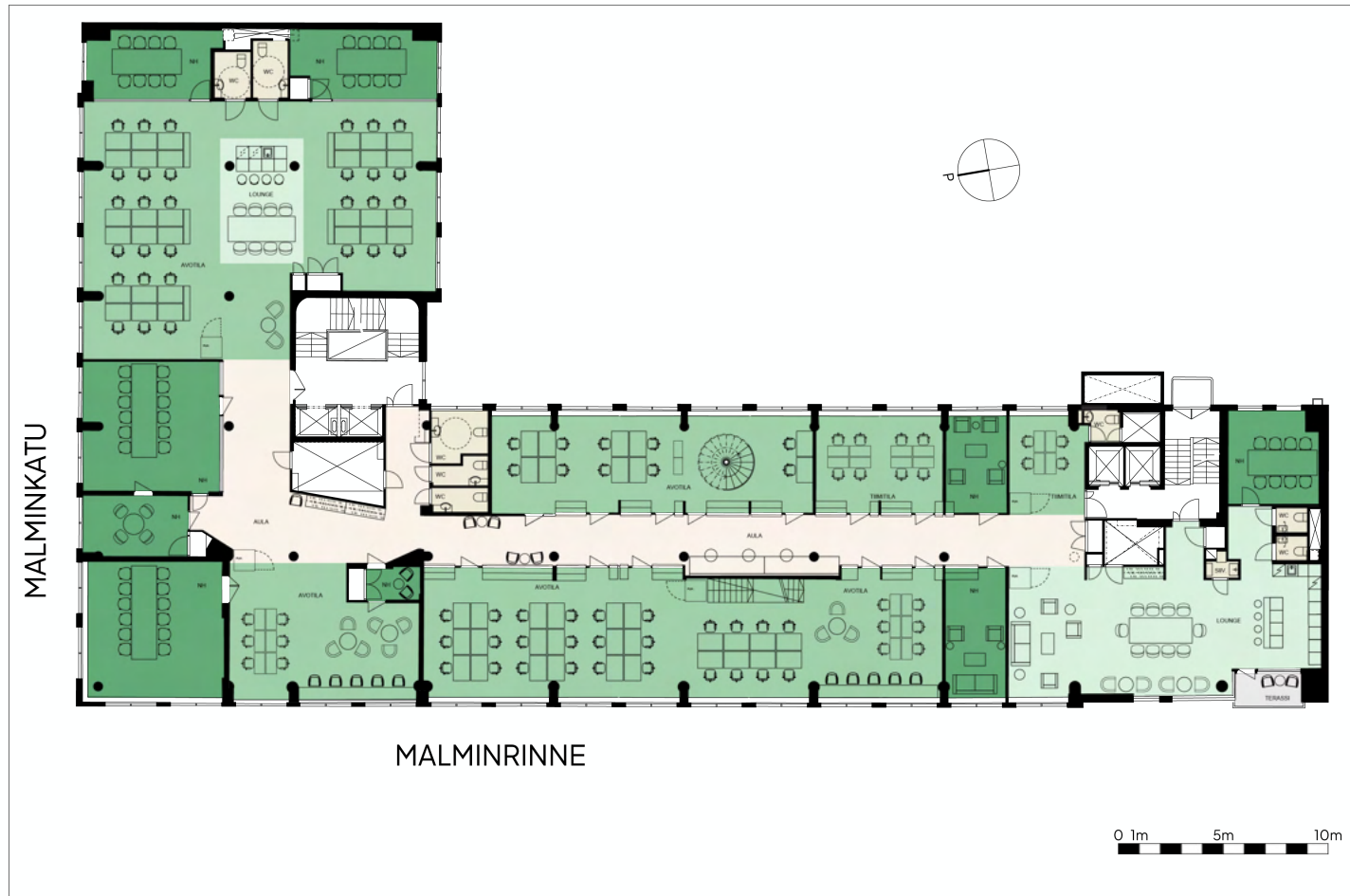
Accessible toilets, 7 pcs



Supporting facilities



0 1m 5m 10m



7TH FLOOR / 984 M²

984 m²

Number of workstations: 90 pcs

Free form workstations: 19 pcs

Lounge-like workstations: 35 pcs

Open space / Team rooms

Lounge

Lobby

Meeting rooms (2–4 ppl), 4 pcs

Meeting rooms (5–8 ppl), 3 pcs

Meeting rooms (8+ ppl), 2 pcs

Phone booth, 5 pcs

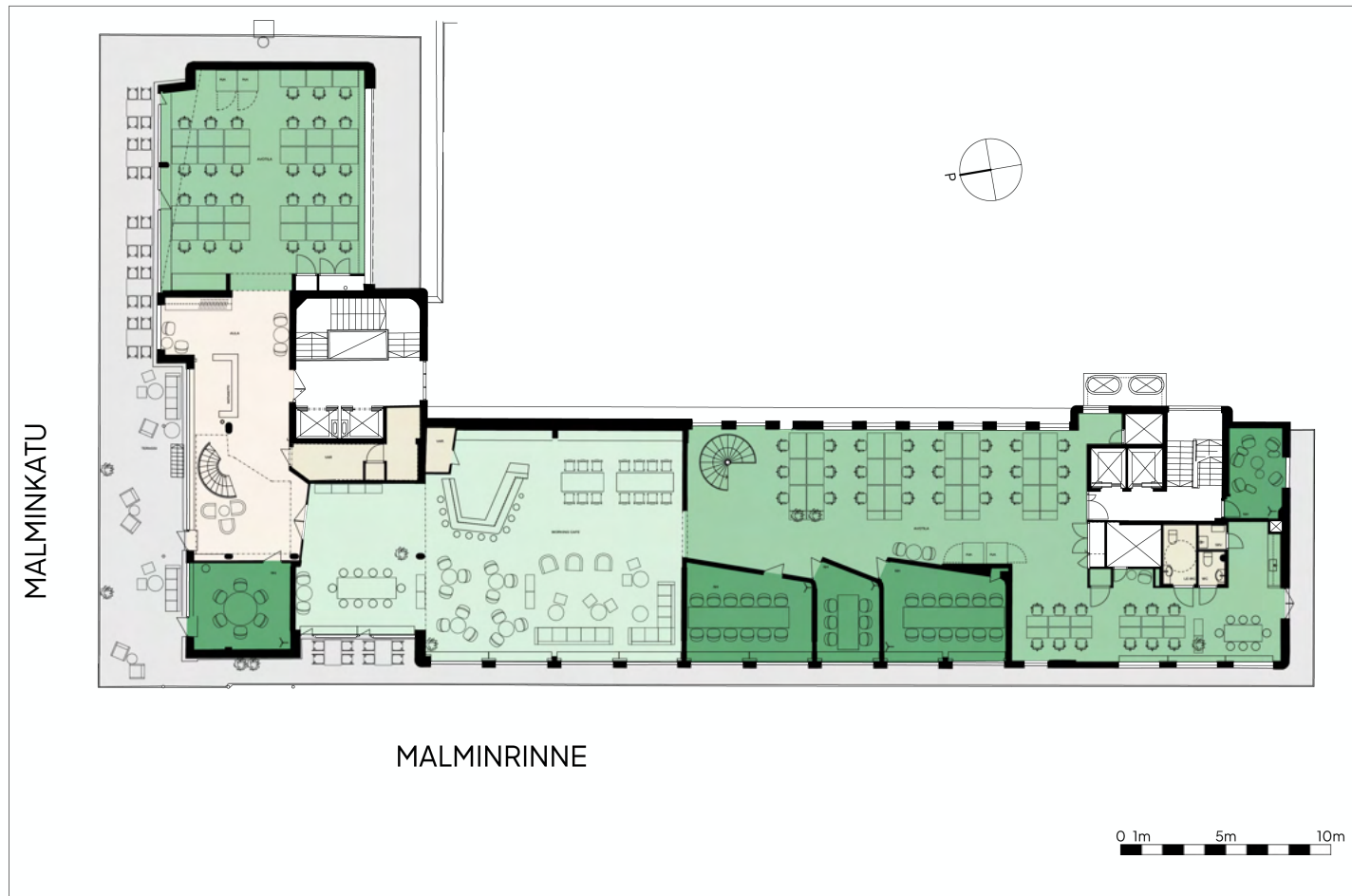
Toilets, 5 pcs

Accessible toilets, 3 pcs

Supporting facilities

Terrace 5 m²





8TH FLOOR / 667 M²

667m²

Number of workstations: 63 pcs

Free form workstations: 49 pcs

Lounge-like workstations: 28 pcs

Open space / Team rooms

Lounge

Lobby

Meeting rooms (2–4 ppl), 0 pcs

Meeting rooms (5–8 ppl), 3 pcs

Meeting rooms (8+ ppl), 2 pcs

Phone booth, 4 pcs

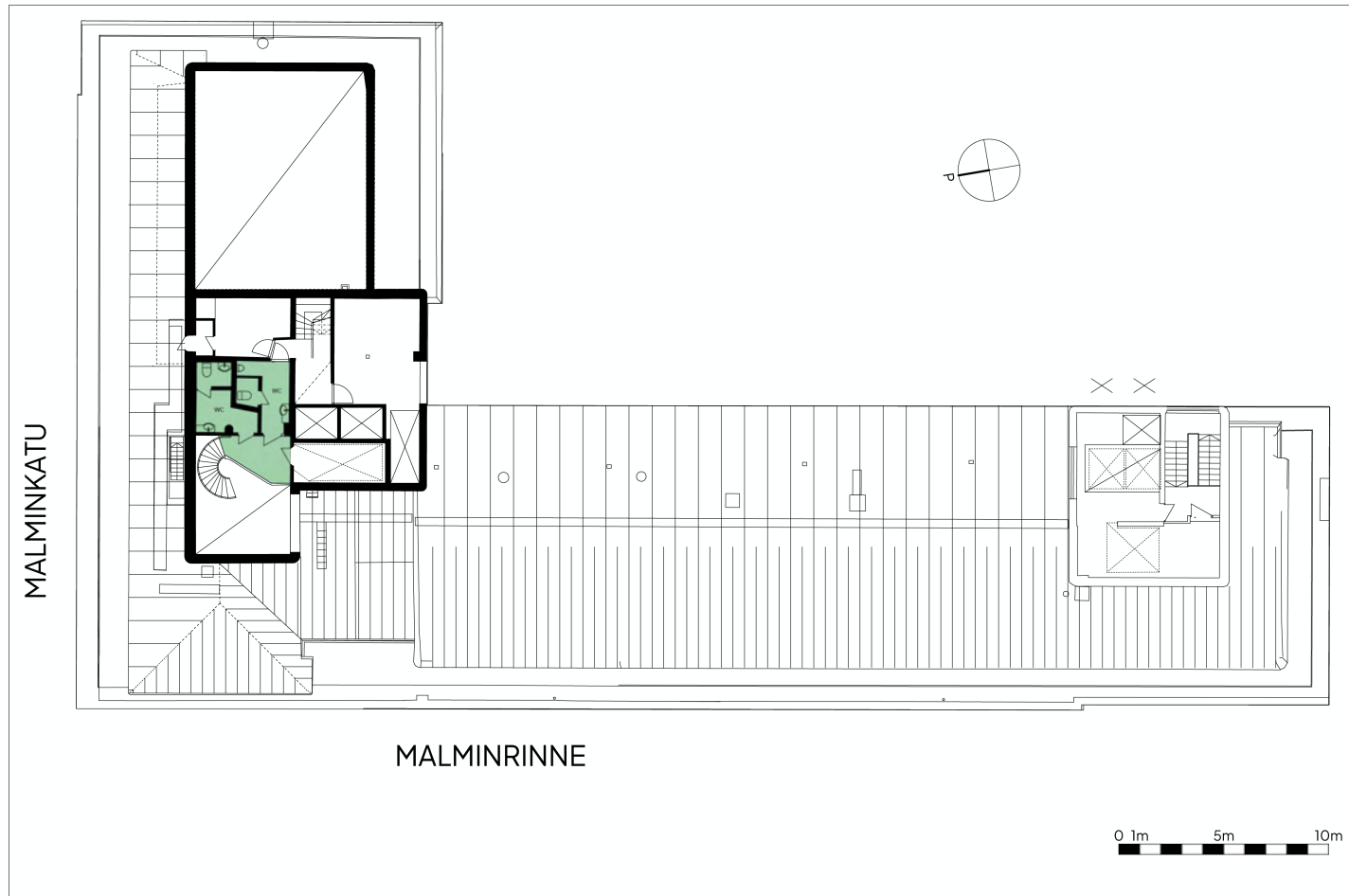
Toilets, 1 pcs

Accessible toilets, 1 pcs

Supporting facilities

Terrace 217,5 m²



**9TH FLOOR / 21 M²**21m²

Toilets, 2 pcs



Voimatalo heritage



Innovations &

HUMANE DESIGN.



Aarne Ervi (1910–1977) was one of the most notable architects in post-war Finland.



Ervin's work involved experimenting with new technical solutions or materials. He aimed for a human scale and harmony.



Ervi designed hydroelectric power plants and associated employee residential areas for Oulujoki Ltd and Imatran Voima Ltd.



Voimatalo, completed in 1952, was a pioneering building in office design in Finland. Its flexible layout and innovative solutions are still relevant.

VOIMATALO